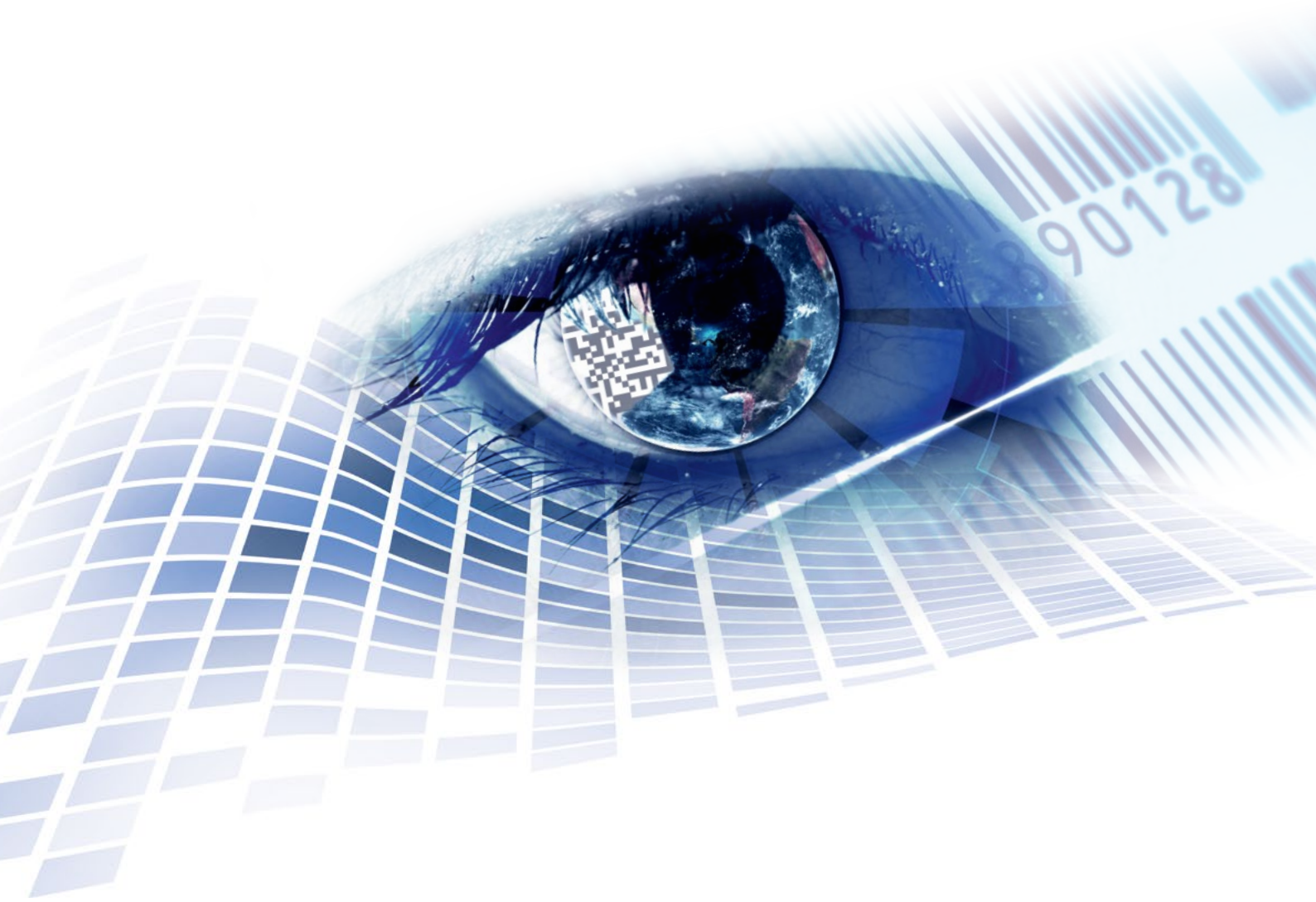


LABEL PRINTERS

Packaging printing in perfection.



LABELING VISIONS

everything . is . possible

Contents

| | | |
|------------|---|--------------|
| Micra II | Appealing design and compact overall size. | Page 4 . 5 |
| Pica II | High reliability in second generation. | Page 6 . 7 |
| Vita V | More flexibility. More efficiency. More reliability. | Page 8 . 9 |
| Compa V | High versatility in a new look. | Page 10 . 11 |
| Vario III | Bestselling printer already in its third generation. | Page 12 . 13 |
| Spectra II | Highspeed performance in second generation. | Page 14 . 15 |

Micra II

Appealing design and compact overall size.



Highlights

- > Cost-effective entry-level printers for small print volumes
- > Thermal direct or thermal transfer print
- > Print width up to 105.7 mm
- > Ethernet, serial and USB port
- > Double sensor system

Options

- > "Guillotine" and "Rotation" cutter unit
- > Dispenser unit with photocell
- > External label unwinder

Rotation cutter unit



Dispenser unit



External label unwinder



| | Micra II 104/8 | Micra II 106/12 |
|--|--|--------------------|
| Printing | | |
| Print resolution | 203 dpi | 300 dpi |
| Print speed | max 130 mm/s | max 100 mm/s |
| Print width | max 104 mm | max 105.7 mm |
| Passage width | max 118 mm | max 118 mm |
| Printhead | Flat Type | Flat Type |
| Labels | | |
| Adhesive labels, continuous labels | rolls: paper, cardboard, textile, synthetics | |
| Material weight | min 0.06 mm / max 0.25 mm | |
| Label width | min 25 mm | |
| Label height Standard Cutter mode / dispenser mode | max 12 mm max 25 mm | |
| Label height | max 1727 mm | 762 mm |
| Roll diameter | max 127 mm | |
| Core diameter | 25.4 mm / 38.1 mm / 76.2 mm | |
| Winding | outside or inside | |
| Label sensor | below transmission and reflexion | |
| Transfer Ribbons | | |
| Ink | outside | |
| Core diameter | 25.4 mm / 1" | |
| Roll diameter | max Ø 68 mm | |
| Length | max 300 m | |
| Width | max 110 mm | |
| Fonts | | |
| Font types | 6 bitmap fonts 6 proportional fonts more fonts on demand | |
| Bar Codes | | |
| 1D bar codes | CODABAR, Code 128, Code 2/5 interleaved, Code 39, Code 39 extended, Code 93, EAN 13, EAN 8, EAN ADD ON, GS1-128, Identcode, ITF 14, Leitcode, Pharmacode, PZN 7 Code, UPC-A, UPC-E | |
| 2D bar codes | Aztec Code, CODABLOCK F, DataMatrix, GS1 DataMatrix, MAXICODE, PDF 417, QR Code | |
| GS1 bar codes | GS1 DataBar Expanded, GS1 DataBar Limited, GS1 DataBar Omnidirectional, GS1 DataBar Stacked, GS1 DataBar Truncated | |
| Dimensions | | |
| width x height x depth | 285 x 171 x 226 mm | |
| Weight | | |
| Weight | 2.72 kg | |
| Interfaces | | |
| Serial | RS-232C (max 115,200 baud) | |
| USB | 2.0 High Speed Slave | |
| Ethernet | 10/100 Base T, LPD, RawIP-Printing, DHCP | |
| Operating Conditions | | |
| Nominal voltage | label printer: 100 ... 240 V AC / 50 - 60 Hz portable power supply: 24 V DC | |
| Power | max 60 VA | |
| Operating temperature | 5 ... 40 °C | |
| Relative humidity | max 85 % (non-condensing) | |
| Operation panel | | |
| LED | Two-color status LED: Ready and Status | |
| Taste | function key: Feed | |

Pica II

High reliability in second generation.



Highlights

- > Stable metal housing for industrial applications
- > Small footprint for applications with limited space
- > Serial, parallel and USB port
- > Display for comfortable operation
- > Cover with viewing window

Options

- > LAN and WLAN 802.11 b/g interface
- > Guillotine cutter unit
- > Dispenser unit
- > Dispenser I/O
- > External label rewinder

Guillotine cutter unit



Dispenser unit



External label rewinder



| | Pica II 104/8 | Pica II 106/12 | Pica II 103/8 T | Pica II 108/12 T |
|--|--|--------------------------|--------------------------|--------------------------|
| Printing | | | | |
| Print resolution | 200 dpi | 300 dpi | 203 dpi | 300 dpi |
| Print speed | max 100 mm/s | max 100 mm/s | max 100 mm/s | max 100 mm/s |
| Print width | max 104 mm | max 105.7 mm | max 104 mm | max 108.4 mm |
| Passage width | max 110 mm | max 110 mm | max 110 mm | max 110 mm |
| Printhead | Flat Type ² | Flat Type ² | Flat Type ¹ | Flat Type ¹ |
| Labels | | | | |
| Adhesive labels, continuous labels | rolls or fan-fold: paper, cardboard, textile, synthetics | | | |
| Material weight | max 220 g/m ² (larger on demand) | | | |
| Label width | min 15 mm | | | |
| Label height Standard Cutter mode/dispenser mode | min 6 mm min 15 mm | | | |
| Label height Standard Ethernet (option) | max 750 mm max 650 mm | max 750 mm max 650 mm | max 650 mm max 450 mm | max 650 mm max 450 mm |
| Roll diameter internal unwinder internal rewinder | max 180 mm - | | | |
| Core diameter | 40 mm / 75 mm (option) | | | |
| Winding | outside or inside | | | |
| Label sensor Standard Option | transmission top transmission and reflexion / bottom transmission and reflexion | | | |
| Transfer Ribbons (for thermal transfer printer only) | | | | |
| Ink | outside / inside (option) | | | |
| Core diameter | 25.4 mm / 1" | | | |
| Roll diameter | max Ø 70 mm | | | |
| Length | max 300 m | | | |
| Width | max 110 mm | | | |
| Fonts | | | | |
| Font types | 6 bitmap fonts 8 vector fonts/TrueType fonts 6 proportional fonts more fonts on demand | | | |
| Bar Codes | | | | |
| 1D bar codes | CODABAR, Code 128, Code 2/5 interleaved, Code 39, Code 39 extended, Code 93, EAN 13, EAN 8, EAN ADD ON, GS1-128, Identcode, ITF 14, Leitcode, Pharmacode, PZN 7 Code, PZN 8 Code, UPC-A, UPC-E | | | |
| 2D bar codes | Aztec Code, CODABLOCK F, DataMatrix, GS1 DataMatrix, MAXICODE, PDF 417, QR Code | | | |
| GS1 bar codes | GS1 DataBar Expanded, GS1 DataBar Limited, GS1 DataBar Omnidirectional, GS1 DataBar Stacked, GS1 DataBar Stacked Omnidirectional, GS1 DataBar Truncated | | | |
| Dimensions | | | | |
| width x height x depth | 230 x 230 x 350 mm | | | |
| Weight | | | | |
| Weight | 9 kg | | | |
| Interfaces | | | | |
| Serial | RS-232C (max 115,200 baud) | | | |
| Parallel | Centronics (SPP) | | | |
| USB | 2.0 High Speed Slave | | | |
| Ethernet (option) | 10/100 Base T, LPD, RawIP-Printing, DHCP, HTTP, FTP | | | |
| WLAN (option) | module 802.11 b/g/n WEP, WPA, WPA-PSK, WPA2, WPA2-PSK, EAP | | | |
| Operating Conditions | | | | |
| Nominal voltage | 110 ... 230 V AC / 50-60 Hz - 2 A 115 V AC / 50-60 Hz - 3 A (option) voltage adjustment by an internal voltage selector pre-adjustment 230 V AC | | | |
| Power | max 150 VA | | | |
| Operating temperature | 5 ... 35 °C | | | |
| Relative humidity | max 80 % (non-condensing) | | | |

¹ = Flat Type for thermal direct . ² = Flat Type for thermal transfer

Vita V

More flexibility. More efficiency. More reliability.



Highlights

- > Graphic display with white background lighting
- > Serial, LAN and USB port
- > Print resolution: 200 dpi, 300 dpi and 600 dpi
- > Slot for SD card
- > Double sensor system

Options

- > WLAN 802.11 b/g interface
- > Guillotine cutter unit
- > Dispenser unit
- > Dispenser I/O
- > External label rewinder

Guillotine cutter unit



Dispenser unit



External label rewinder



| | Vita V 103/8 T | Vita V 104/8 | Vita V 106/12 | Vita V 106/24 | Vita V 108/12 T |
|---|--|--------------------------|--------------------------|--------------------------|--------------------------|
| Printing | | | | | |
| Print resolution | 203 dpi | 203 dpi | 300 dpi | 600 dpi | 300 dpi |
| Print speed | max 200 mm/s | max 200 mm/s | max 150 mm/s | max 100 mm/s | max 150 mm/s |
| Print width | max 104 mm | max 104 mm | max 105.7 mm | max 105.7 mm | max 108.4 mm |
| Passage width Standard Cutter mode/dispenser mode | max 116 mm max 112 mm | max 116 mm max 112 mm | max 116 mm max 112 mm | max 116 mm max 112 mm | max 116 mm max 112 mm |
| Printhead | Flat Type ¹ | Flat Type ² | Flat Type ² | Flat Type ² | Flat Type ¹ |
| Labels | | | | | |
| Adhesive labels, continuous labels | rolls or fan-fold: paper, cardboard, textile, synthetics | | | | |
| Material weight | max 220 g/m ² (larger on demand) | | | | |
| Label width | min 12 mm | | | | |
| Label height Standard Cutter mode/dispenser mode | min 5 mm min 15 mm | | | | |
| Label height | max 6000 mm | max 6000 mm | max 3000 mm | max 1000 mm | max 3000 mm |
| Roll diameter internal unwinder internal rewinder | max 180 mm - | | | | |
| Core diameter | 40 mm / 75 mm (option) | | | | |
| Winding | outside or inside | | | | |
| Label sensor | bottom transmission and reflexion | | | | |
| Transfer Ribbons | | | | | |
| Ink | outside or inside | | | | |
| Core diameter | 25.4 mm / 1" | | | | |
| Roll diameter | max Ø 80 mm | | | | |
| Length | max 450 m | | | | |
| Width | max 110 mm | | | | |
| Fonts | | | | | |
| Font types | 6 bitmap fonts 8 vector fonts/TrueType fonts 6 proportional fonts more fonts on demand | | | | |
| Bar Codes | | | | | |
| 1D bar codes | CODABAR, Code 128, Code 2/5 interleaved, Code 39, Code 39 extended, Code 93, EAN 13, EAN 8, EAN ADD ON, GS1-128, Identcode, ITF 14, Leitcode, Pharmacode, PZN 7 Code, PZN 8 Code, UPC-A, UPC-E | | | | |
| 2D bar codes | Aztec Code, CODABLOCK F, DataMatrix, GS1 DataMatrix, MAXICODE, PDF 417, QR Code | | | | |
| GS1 bar codes | GS1 DataBar Expanded, GS1 DataBar Limited, GS1 DataBar Omnidirectional, GS1 DataBar Stacked, GS1 DataBar Stacked Omnidirectional, GS1 DataBar Truncated | | | | |
| Dimensions | | | | | |
| width x height x depth | 236 x 238 x 374 mm | | | | |
| Weight | | | | | |
| Weight | 11 kg | | | | |
| Interfaces | | | | | |
| Serial | RS-232C (max 115,200 baud) | | | | |
| USB | 2.0 High Speed Slave | | | | |
| Ethernet | 10/100 Base T, LPD, RawIP-Printing, DHCP, HTTP, FTP | | | | |
| 2 x USB Host | on the back for: keyboard, USB memory stick | | | | |
| WLAN (option) | USB WLAN stick | | | | |
| Operating Conditions | | | | | |
| Nominal voltage | 110 ... 230 V AC / 50-60 Hz | | | | |
| Power | 275 VA | | | | |
| Nominal current | 2.5 A | | | | |
| Operating temperature | 5 ... 35 °C | | | | |
| Relative humidity | max 80 % (non-condensing) | | | | |

¹ = Flat Type for thermal direct . ² = Flat Type for thermal transfer

Compa V

High versatility in a brand new look.



Highlights

- > Large label rolls with a diameter up to 205 mm
- > Print speed up to 300 mm/s
- > Easy to operate and maintain
- > Graphic display with white background lighting
- > Serial, LAN and USB port
- > Slot for SD card
- > Stand-alone mode
- > Double sensor system

Options

- > Rotation cutter unit
- > Dispenser unit
- > Dispenser I/O
- > Internal rewinder
- > External label rewinder
- > Pneumatic applicator

Guillotine cutter unit



Dispenser unit



External label rewinder



| | Compa V 103/8 | Compa V 104/8 | Compa V 106/12 | Compa V 106/24 | Compa V 108/12 | Compa V 162/12 |
|---------------------------------------|--|-----------------|-----------------|-----------------|--------------------|--------------------|
| Printing | | | | | | |
| Print resolution | 203 dpi | 203 dpi | 300 dpi | 600 dpi | 300 dpi | 300 dpi |
| Print speed (max) | 300 mm/s | 300 mm/s | 300 mm/s | 150 mm/s | 300 mm/s | 250 mm/s |
| Print width (max) | 104 mm | 104 mm | 105.7 mm | 105.6 mm | 108.4 mm | 162.6 mm |
| Passage width (max) | 120 mm | 120 mm | 120 mm | 120 mm | 120 mm | 180 mm |
| Printing principle | TT/TD ¹ | TT ² | TT ² | TT ² | TT/TD ¹ | TT/TD ¹ |
| Labels | | | | | | |
| Labels, continuous rolls or fan-fold | paper, cardboard, textile, synthetics | | | | | |
| Material weight (max) | max. 220 g/m ² (larger on demand) | | | | | |
| Label width (min) | 20 mm | | | | | 46 mm |
| Liner width (min) | 25 mm | | | | | 50 mm |
| Label height (min) | 5 mm | | | | | 5 mm |
| Cutter / dispenser mode | 15 mm | | | | | 25 mm |
| Label height (max) | 6000 mm | | 3000 mm | | 2000 mm | |
| Standard | 200 mm | | 200 mm | | 200 mm | |
| Dispenser mode | 200 mm | | 200 mm | | 200 mm | |
| Roll diameter (max) | 205 mm | | | | | |
| Core diameter | Ø 40 mm | | | | | |
| Standard | Ø 38.1 up to Ø 76 mm (optional additional cores possible) | | | | | |
| Additional dimensions | | | | | | |
| Winding | outside or inside | | | | | |
| Label sensor | transmission and reflexion from below | | | | | |
| Transfer ribbon | | | | | | |
| Ink | outside or inside | | | | | |
| Core diameter | 25.4 mm / 1" | | | | | |
| Roll diameter (max) | Ø 90 mm | | | | | |
| Length (max) | 600 m | | | | | |
| Width (max) | 114 mm | | | | | 170 mm |
| Internal rewinder for printers | | | | | | |
| Outside diameter | 142 mm | | | | | |
| Core diameter | Ø 40 mm | | | | | |
| Winding | outside | | | | | |
| Fonts and bar codes | | | | | | |
| Font types | 6 bitmap Fonts 8 vector fonts/TrueType fonts 6 proportional fonts other fonts on demand | | | | | |
| 1D bar codes | CODABAR, Code 128, Code 2/5 interleaved, Code 39, Code 39 extended, Code 93, EAN 13, EAN 8, EAN ADD ON, GS1-128, Identcode, ITF 14, Leitcode, Pharmacode, PZN 7 Code, PZN 8 Code, UPC-A, UPC-E | | | | | |
| 2D bar codes | Aztec Code, CODABLOCK F, DataMatrix, GS1 DataMatrix, MAXICODE, PDF 417, QR Code | | | | | |
| GS1 bar codes | GS1 DataBar Expanded, GS1 DataBar Limited, GS1 DataBar Omnidirectional, GS1 DataBar Stacked, GS1 DataBar Stacked Omnidirectional, GS1 DataBar Truncated | | | | | |
| Dimensions | | | | | | |
| Width x height x depth (mm) | 252 x 288 x 460 | | | | | 312 x 288 x 460 |
| Weight | 10 kg | | | | | 14 kg |
| Interfaces | | | | | | |
| Serial | RS-232C (bis 115.200 Baud) | | | | | |
| USB | 2.0 High Speed Slave | | | | | |
| Ethernet | 10/100 Base T, LPD, RawIP-Printing, DHCP | | | | | |
| 2 x USB Host | on the back for: keyboard, USB memory stick | | | | | |
| Operating data | | | | | | |
| Power supply | 110 ... 240 V AC / 50-60 Hz | | | | | |
| Max. power consumption | 200 VA | | | | | |
| Nominal current | 2.5 A | | | | | |
| Operating temperature | 5 ... 35 °C | | | | | |
| Relative humidity | max. 85 % (non-condensing) | | | | | |

¹ = Thermal transfer/thermal direct . ² = Thermal transfer

Vario III

Bestselling printer already in its third generation.



Highlights

- > 7" Touch-screen display
Variant with LCD graphic display & foil keyboard¹
- > Internal rewinder (max Ø 100 mm)
- > Serial, parallel, LAN and USB port
- > Unicode-compliant for multilingual applications
- > Stand-alone mode
- > Insertion for Compact Flash card

Options

- > Bar code scanner
- > WLAN 802.11 b/g interface
- > Dispenser I/O
- > Guillotine cutter unit
- > Dispenser unit

¹ These are two independent printers.

Guillotine cutter unit



Dispenser unit



Touch-screen display



| | Vario III 103/8 T | Vario III 104/8 | Vario III 107/12 | Vario III 107/24 | Vario III 108/12 T |
|---|--|------------------------|------------------------|------------------------|------------------------|
| Printing | | | | | |
| Print resolution | 203 dpi | 203 dpi | 300 dpi | 600 dpi | 300 dpi |
| Print speed | max 250 mm/s | max 250 mm/s | max 250 mm/s | max 100 mm/s | max 250 mm/s |
| Print width | max 104 mm | max 104 mm | max 105.7 mm | max 105.7 mm | max 108.4 mm |
| Passage width | max 110 mm | max 110 mm | max 110 mm | max 110 mm | max 110 mm |
| Printhead | Flat Type ¹ | Flat Type ² | Flat Type ² | Flat Type ² | Flat Type ¹ |
| Labels | | | | | |
| Adhesive labels, continuous labels | rolls or fan-fold: paper, cardboard, textile, synthetics | | | | |
| Material weight | max 220 g/m ² (larger on demand) | | | | |
| Label width | min 15 mm | | | | |
| Label height Standard Cutter mode/dispenser mode | min 6 mm min 15 mm | | | | |
| Label height | max 6000 mm | max 6000 mm | max 3000 mm | max 1000 mm | max 3000 mm |
| Roll diameter internal unwinder internal rewinder | max 200 mm max 100 mm | | | | |
| Core diameter | 40 mm / 75 mm (option) | | | | |
| Winding | outside or inside | | | | |
| Label sensor Standard Option | transmission top or bottom reflexion | | | | |
| Transfer Ribbons | | | | | |
| Ink | outside or inside | | | | |
| Core diameter | 25.4 mm / 1" | | | | |
| Roll diameter | max Ø 80 mm | | | | |
| Length | max 450 m | | | | |
| Width | max 110 mm | | | | |
| Fonts | | | | | |
| Font types | 6 bitmap fonts 8 vector fonts/TrueType fonts 6 proportional fonts more fonts on demand | | | | |
| Bar Codes | | | | | |
| 1D bar codes | CODABAR, Code 128, Code 2/5 interleaved, Code 39, Code 39 extended, Code 93, EAN 13, EAN 8, EAN ADD ON, GS1-128, Identcode, ITF 14, Leitcode, Pharmacode, PZN 7 Code, PZN 8 Code, UPC-A, UPC-E | | | | |
| 2D bar codes | Aztec Code, CODABLOCK F, DataMatrix, GS1 DataMatrix, MAXICODE, PDF 417, QR Code | | | | |
| GS1 bar codes | GS1 DataBar Expanded, GS1 DataBar Limited, GS1 DataBar Omnidirectional, GS1 DataBar Stacked, GS1 DataBar Stacked Omnidirectional, GS1 DataBar Truncated | | | | |
| Dimensions | | | | | |
| width x height x depth | 230 x 310 x 450 mm | | | | |
| Weight | | | | | |
| Weight | 16 kg | | | | |
| Interfaces | | | | | |
| Serial | RS-232C (max 115,200 baud) | | | | |
| Parallel | SPP | | | | |
| USB | 2.0 High Speed Slave | | | | |
| Ethernet | 10/100 Base T, LPD, RawIP-Printing, DHCP, HTTP, FTP | | | | |
| WLAN (option) | module 802.11 b/g/n WEP, WPA, WPA-PSK, WPA2, WPA2-PSK, EAP | | | | |
| Operating Conditions | | | | | |
| Nominal voltage | 110 ... 230 V AC / 50-60 Hz | | | | |
| Power | max 150 VA | | | | |
| Operating temperature | 5 ... 35 °C | | | | |
| Relative humidity | max 80 % (non-condensing) | | | | |

¹ = Flat Type for thermal direct . ² = Flat Type for thermal transfer

Spectra II

Highspeed performance in second generation.



Highlights

- > 6.5" Touch-screen display
Variant with LCD graphic display & foil keyboard¹
- > Print speed up to 350 mm/s
- > Compact cover
- > Transfer ribbon saving

Options

- > Rotation cutter unit
- > Dispenser unit
- > Roll-to-Roll
- > Internal rewinder
- > External rewinder

¹ These are two independent printers.

Rotation cutter unit



Dispenser unit












Internal rewinder



| | Spectra II 103/8 (104/8) | Spectra II 106/12 | Spectra II 106/24 | Spectra II 107/12 | Spectra II 108/12 | Spectra II 160/12 | Spectra II 162/12 | Spectra II 216/12 |
|------------------------------------|---|------------------------|------------------------|--------------------------|--------------------------|--------------------------|--------------------------|--------------------------|
| Printing | | | | | | | | |
| Print resolution | 200 dpi | 300 dpi | 600 dpi | 300 dpi | 300 dpi | 300 dpi | 300 dpi | 300 dpi |
| Print speed | 350 mm/s | 350 mm/s | 100 mm/s | 350 mm/s | 350 mm/s | 300 mm/s | 300 mm/s | 200 mm/s |
| Print width | 104 mm | 105.7 mm | 105.6 mm | 106.6 mm | 108.4 mm | 160 mm | 162.6 mm | 216.8 mm |
| Passage width | 116 mm | 116 mm | 116 mm | 116 mm | 116 mm | 176 mm | 176 mm | 226 mm |
| Printhead | Flat Type ¹⁺² | Flat Type ² | Flat Type ² | Corner Type ² | Flat Type ¹⁺² | Corner Type ² | Flat Type ¹⁺² | Flat Type ¹⁺² |
| Labels | | | | | | | | |
| Adhesive labels, continuous labels | rolls or fan-fold: paper, cardboard, textile, synthetics | | | | | | | |
| Material weight | max. 220 g/m ² (larger on demand) | | | | | | | |
| Label width | min 15 mm | min 15 mm | min 15 mm | min 15 mm | min 15 mm | min 50 mm | min 50 mm | min 100 mm |
| Label height | Standard min 6 mm Cutter mode/dispenser mode min 25 mm | | | | | | | |
| Label height | max 6000 mm | max 3000 mm | max 750 mm | max 3000 mm | max 3000 mm | max 2000 mm | max 2000 mm | max 1000 mm |
| Roll diameter | Internal unwinder max 200 mm Internal rewinder max 200 mm (option) | | | | | | | |
| Core diameter | 40 mm / 75 mm (option) | | | | | | | |
| Winding | outside or inside | | | | | | | |
| Label sensor | Standard bottom transmission and reflexion Option top transmission and reflexion, ultrasonic photocell | | | | | | | |
| Transfer Ribbon | | | | | | | | |
| Ink | outside or inside | | | | | | | |
| Core diameter | 25.4 mm / 1" | | | | | | | |
| Roll diameter | max Ø 90 mm | | | | | | | |
| Length | max 450 m | | | | | | | |
| Width | max 110 mm | max 110 mm | max 110 mm | max 110 mm | max 110 mm | max 163 mm | max 170 mm | max 220 mm |
| Fonts | | | | | | | | |
| Font types | 6 bitmap fonts 8 vector fonts/TrueType fonts 6 proportional fonts other fonts on demand | | | | | | | |
| Bar Codes | | | | | | | | |
| 1D bar codes | CODABAR, Code 128, Code 2/5 interleaved, Code 39, Code 39 extended, Code 93, EAN 13, EAN 8, EAN ADD ON, GS1-128, Ident-code, ITF 14, Leitcode, Pharmacode, PZN Code, UPC-A, UPC-E | | | | | | | |
| 2D bar codes | Aztec Code, CODABLOCK F, DataMatrix, GS1 DataMatrix, MAXICODE, PDF 417, QR Code | | | | | | | |
| Composite bar codes | GS1 DataBar Expanded, GS1 DataBar Limited, GS1 DataBar Omnidirectional, GS1 DataBar Stacked, GS1 DataBar Stacked Omnidirectional, GS1 DataBar Truncated | | | | | | | |
| Dimensions | | | | | | | | |
| width x height x depth | 287 x 380 x 503 mm | 287 x 380 x 503 mm | 287 x 380 x 503 mm | 287 x 380 x 503 mm | 287 x 380 x 503 mm | 337 x 380 x 503 mm | 337 x 380 x 503 mm | 387 x 380 x 503 mm |
| Weight | | | | | | | | |
| Weight | 19 kg | 19 kg | 19 kg | 19 kg | 19 kg | 21 kg | 21 kg | 28 kg |
| Interfaces | | | | | | | | |
| Serial | RS-232C (max 115,200 baud) | | | | | | | |
| Parallel | SPP | | | | | | | |
| USB | 2.0 High Speed Slave | | | | | | | |
| Ethernet | 10/100 Base T, LPD, RawIP-Printing, DHCP, HTTP, FTP | | | | | | | |
| WLAN (option) | module 802.11 b/g/n WEP, WPA, WPA-PSK, WPA2, WPA2-PSK, EAP | | | | | | | |
| Operating Conditions | | | | | | | | |
| Nominal voltage | 110 ... 230 V AC / 50 - 60 Hz | | | | | | | |
| Power | 300 VA | | | | | | | |
| Nominal current | 2.7 A | | | | | | | |
| Operating temperature | 5 ... 35 °C | | | | | | | |
| Relative humidity | max 80 % (non-condensing) | | | | | | | |

¹ = for thermal direct . ² = for thermal transfer

- Label applicator 
- Ribbon save 
- Bar code scanner 
- Thermal printhead 
- Touch panel 
- WLAN 
- Config Tool 
- Labelstar Office 
- NiceLabel 

Local retailer

Branches:

Sales office Bavaria

Marienplatz 8a . 83043 Bad Aibling
 Phone +49 8061 3498888 . Fax +49 8061 3499127 . rstreck@carl-valentin.de

Sales office Spain

Calle historiador Vedia 14 5ªB . 15004 La Coruña
 Phone +34 881 103163 . Mobile +34 609022241 . mllano@carl-valentin.es

Sales office Switzerland

Swiss Business Haus . Moosäckerstraße 75 . 8105 Regensdorf
 Phone +41 61 9739641 . Mobile +41 79 7448436 . info@carl-valentin.ch



Carl Valentin GmbH
 Neckarstraße 78–86 u. 94
 78056 Villingen-Schwenningen
 Phone +49 7720 9712-0 . Fax +49 7720 9712-9901
info@carl-valentin.de . www.carl-valentin.de

